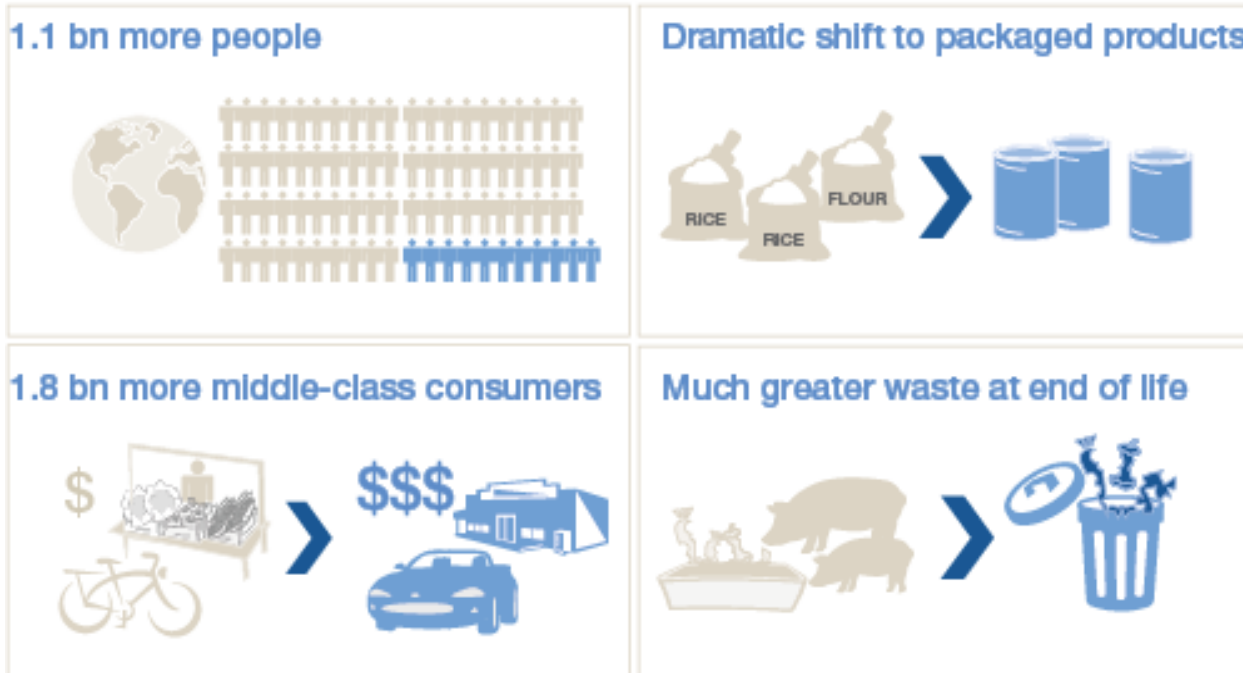


Consumption Exceeding Resources



Scottish Institute for
REMANUFACTURE
Reuse, Repair and Reconditioning

A potential consumption time bomb 2010 -2025



If we remain in our “business as usual” mode , price volatility will continue to surge, alongside the probable inflation of commodities

Source: World Economic Forum

Food: caloric consumption
+24%

Food spending
+57%

Packaging
+47%

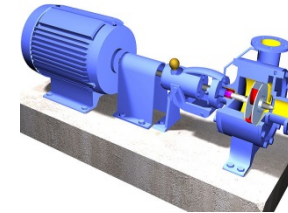
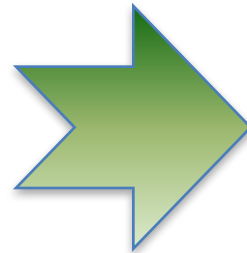
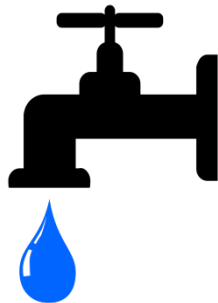
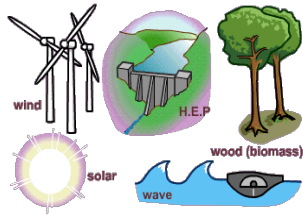
End-of-life materials
+41%

Source: Towards the Circular Economy – Ellen McArthur Foundation

Sustainability Models



Scottish Institute for
REMANUFACTURE
Reuse, Repair and Reconditioning



Inwardly focussed efficiency

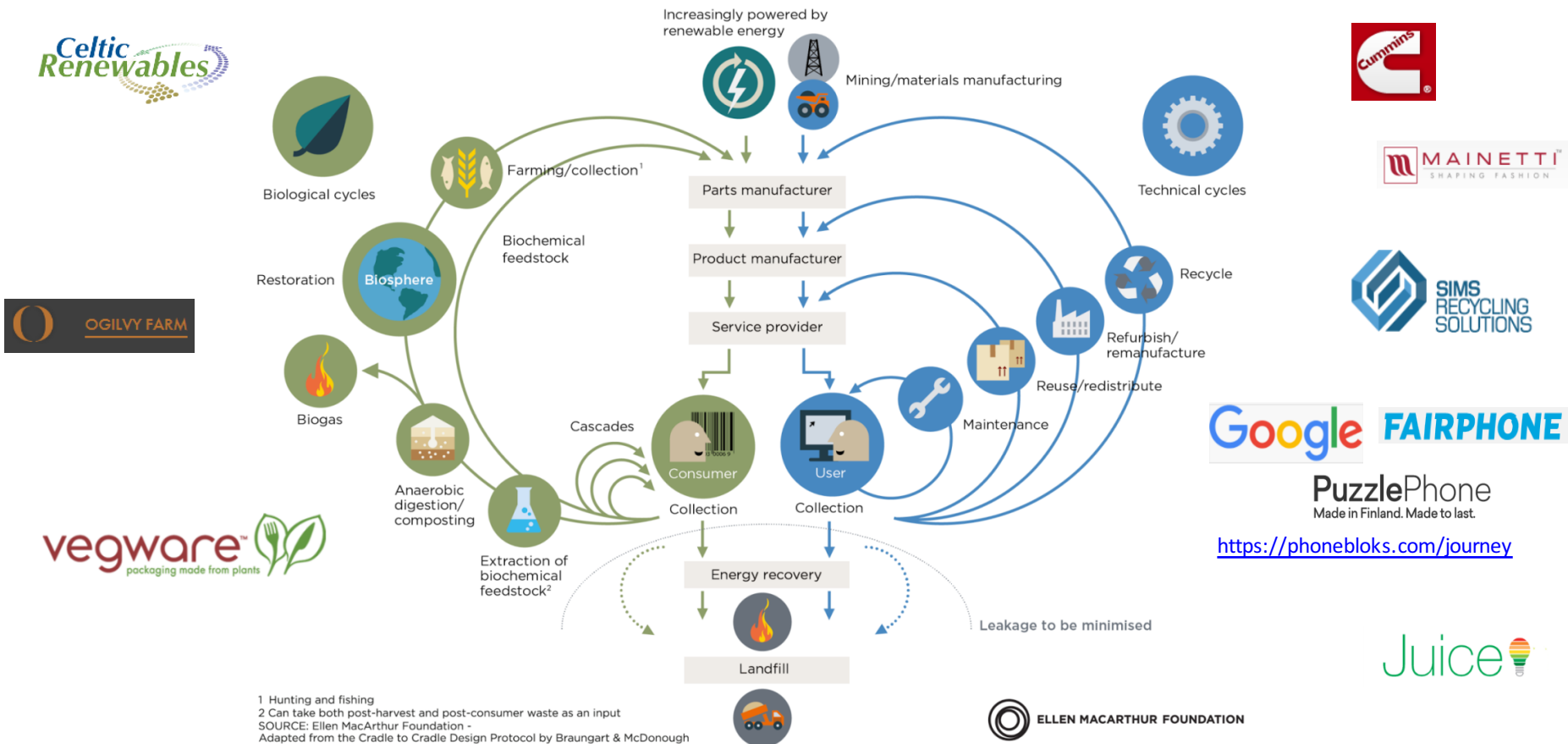
**Outwardly focussed product
and services**

Circular Economy - Scotland



**Scottish Institute for
REMANUFACTURE**
Reuse, Repair and Reconditioning

CIRCULAR ECONOMY - an industrial system that is restorative by design



1 Hunting and fishing
2 Can take both post-harvest and post-consumer waste as an input
SOURCE: Ellen MacArthur Foundation -
Adapted from the Cradle to Cradle Design Protocol by Braungart & McDonough